

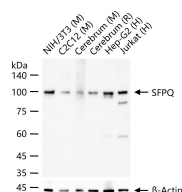
bsm-61746R**[Primary Antibody]****SFPQ Recombinant Rabbit mAb****BioSS**
ANTIBODIES

www.bioss.com.cn

sales@bioss.com.cn

techsupport@bioss.com.cn

400-901-9800

— DATASHEET —**Host:** Rabbit**Isotype:** IgG**Clonality:** Recombinant**CloneNo.:** 1E20**GeneID:** 6421**SWISS:** P23246**Target:** SFPQ**Immunogen:** A synthesized peptide derived from human SFPQ: 650-707/707.**Purification:** affinity purified by Protein A**Storage:** 10mM phosphate buffered saline(pH 7.4) with 150mM sodium chloride, 0.05% BSA, 0.02% Proclin300 and 50% glycerol. Store at 4°C for short term. Store at -20°C for long term. Avoid repeated freeze/thaw cycles.**Background:** DNA- and RNA binding protein, involved in several nuclear processes. Essential pre-mRNA splicing factor required early in spliceosome formation and for splicing catalytic step II, probably as a heteromer with NONO. Binds to pre-mRNA in spliceosome C complex, and specifically binds to intronic polypyrimidine tracts.**Applications:** **WB** (1:500-2000)
IHC-P (1:100-200)
IHC-F (1:100-200)
IF (1:50-200)
ICC/IF (1:50-200)**Reactivity:** Human, Mouse, Rat**Predicted**
MW.: 76**Subcellular**
Location: Nucleus**— VALIDATION IMAGES —**

25 ug total protein per lane of various lysates (see on figure) probed with SFPQ monoclonal antibody, unconjugated (bsm-61746R) at 1:1000 dilution and 4°C overnight incubation. Followed by conjugated secondary antibody incubation at r.t. for 60 min.