

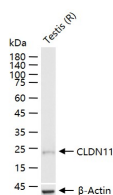
bsm-61745R**[Primary Antibody]****CLDN11 Recombinant Rabbit mAb****Bioss**
ANTIBODIES

www.bioss.com.cn

sales@bioss.com.cn

techsupport@bioss.com.cn

400-901-9800

— DATASHEET —**Host:** Rabbit**Isotype:** IgG**Clonality:** Recombinant**CloneNo.:** 12F5**GeneID:** 5010**SWISS:** O75508**Target:** CLDN11**Immunogen:** A synthesized peptide derived from human Claudin 11: 25-80/207.**Purification:** affinity purified by Protein A**Storage:** 10mM phosphate buffered saline(pH 7.4) with 150mM sodium chloride, 0.05% BSA, 0.02% Proclin300 and 50% glycerol. Store at 4°C for short term. Store at -20°C for long term. Avoid repeated freeze/thaw cycles.**Background:** Plays a major role in tight junction-specific obliteration of the intercellular space, through calcium-independent cell-adhesion activity.**Applications:** **WB** (1:500-2000)**Flow-Cyt** (1:50-100)**Reactivity:** Rat (predicted: Human, Mouse)**Predicted MW.:** 22**Subcellular Location:** Cell membrane**— VALIDATION IMAGES —**

25 ug total protein per lane of various lysates (see on figure) probed with CLDN11 monoclonal antibody, unconjugated (bsm-61745R) at 1:1000 dilution and 4°C overnight incubation. Followed by conjugated secondary antibody incubation at r.t. for 60 min.