

bsm-61744R

[Primary Antibody]

LOR/Loricrin Recombinant Rabbit mAb

BioSS
ANTIBODIES

www.bioss.com.cn

sales@bioss.com.cn

techsupport@bioss.com.cn

400-901-9800

— DATASHEET —

Host: Rabbit

Clonality: Recombinant

GeneID: 4014

Target: LOR/Loricrin

Immunogen: A synthesized peptide derived from human Loricrin: 1-50/312.

Purification: affinity purified by Protein A

Storage: 10mM phosphate buffered saline(pH 7.4) with 150mM sodium chloride, 0.05% BSA, 0.02% Proclin300 and 50% glycerol.
Store at 4°C for short term. Store at -20°C for long term. Avoid repeated freeze/thaw cycles.

Background: Major keratinocyte cell envelope protein.

Isotype: IgG

CloneNo.: 3H2

SWISS: P23490

Applications: WB (1:500-2000)

IHC-P (1:50-200)

IHC-F (1:50-200)

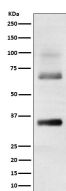
IF (1:50-200)

Reactivity: Human

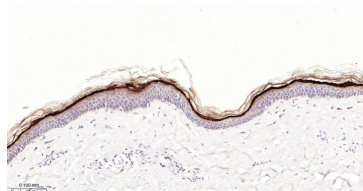
**Predicted
MW.:** 26

**Subcellular
Location:** Cytoplasm ,Nucleus

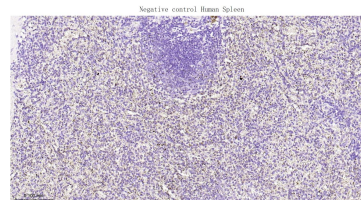
— VALIDATION IMAGES —



Western blot analysis of Human skin cell lysate. Using LOR/Loricrin (bsm-61744R) monoclonal antibody at 1:1000 dilution and 4°C overnight incubation. Followed by conjugated secondary antibody incubation at r.t. for 60 min.



Paraformaldehyde-fixed, paraffin embedded Human Skin; Antigen retrieval by boiling in sodium citrate buffer (pH6.0) for 15 min; The section was incubated with LOR/Loricrin Monoclonal Antibody, Unconjugated (bsm-61744R) at 1:200 overnight at 4°C, followed by conjugation to the bs-0295G-HRP and DAB (C-0010) staining.



(Negative control) Paraformaldehyde-fixed, paraffin embedded Human Spleen; Antigen retrieval by boiling in sodium citrate buffer (pH6.0) for 15 min; The section was incubated with LOR/Loricrin Monoclonal Antibody, Unconjugated (bsm-61744R) at 1:200 overnight at 4°C, followed by conjugation to the bs-0295G-HRP and DAB (C-0010) staining.