

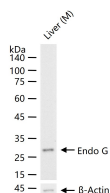
bsm-61741R**[Primary Antibody]**

www.bioss.com.cn

sales@bioss.com.cn

techsupport@bioss.com.cn

400-901-9800

Endo G Recombinant Rabbit mAb**— DATASHEET —****Host:** Rabbit**Isotype:** IgG**Clonality:** Recombinant**CloneNo.:** 10F16**GeneID:** 2021**SWISS:** Q14249**Target:** Endo G**Immunogen:** A synthesized peptide derived from human Endo G: 250-297/297.**Purification:** affinity purified by Protein A**Storage:** 10mM phosphate buffered saline(pH 7.4) with 150mM sodium chloride, 0.05% BSA, 0.02% Proclin300 and 50% glycerol. Store at 4°C for short term. Store at -20°C for long term. Avoid repeated freeze/thaw cycles.**Background:** Endo G is a nuclear encoded endonuclease that is localized in the mitochondrion. The encoded protein cleaves DNA at GC tracts. It is capable of generating the RNA primers required by DNA polymerase gamma to initiate replication of mitochondrial DNA.**Applications:** WB (1:500-2000)**Reactivity:** Mouse (predicted: Human, Rat)**Predicted MW.:** 33**Subcellular Location:** Cytoplasm ,Nucleus**— VALIDATION IMAGES —**

25 ug total protein per lane of various lysates (see on figure) probed with Endo G monoclonal antibody, unconjugated (bsm-61741R) at 1:1000 dilution and 4°C overnight incubation. Followed by conjugated secondary antibody incubation at r.t. for 60 min.