

**bsm-61735R****[ Primary Antibody ]****Bioss**  
**ANTIBODIES**

www.bioss.com.cn

sales@bioss.com.cn

techsupport@bioss.com.cn

400-901-9800

**GLO1 Recombinant Rabbit mAb****— DATASHEET —**

**Host:** Rabbit

**Clonality:** Recombinant

**GeneID:** 2739

**Target:** GLO1

**Immunogen:** A synthesized peptide derived from human Lactoylglutathione lyase: 10-50.

**Purification:** affinity purified by Protein A

**Storage:** 10mM phosphate buffered saline(pH 7.4) with 150mM sodium chloride, 0.05% BSA, 0.02% Proclin300 and 50% glycerol. Store at 4°C for short term. Store at -20°C for long term. Avoid repeated freeze/thaw cycles.

**Background:** Catalyzes the conversion of hemimercaptal, formed from methylglyoxal and glutathione, to S-lactoylglutathione.

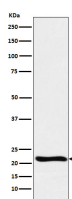
**Isotype:** IgG**SWISS:** Q04760

**Applications:** **WB** (1:1000-2000)  
**Flow-Cyt** (1:50-100)  
**ICC/IF** (1:50-200)

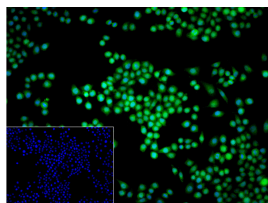
**Reactivity:** Human, Mouse, Rat

**Predicted**  
**MW.:** 21

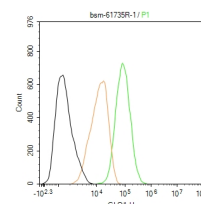
**Subcellular** Secreted ,Cell membrane  
**Location:** ,Cytoplasm ,Nucleus

**— VALIDATION IMAGES —**

Western blot analysis of Raji cell lysate. Using GLO1 (bsm-61735R) monoclonal antibody at 1:1000 dilution and 4°C overnight incubation. Followed by conjugated secondary antibody incubation at r.t. for 60 min.



4% Paraformaldehyde-fixed HeLa (H) cell; Triton X-100 at r.t. for 20 min; Antibody incubation with (GLO1) monoclonal Antibody, unconjugated (bsm-61735R) 1:100, 90 min at 37°C; followed by conjugated Goat Anti-Rabbit IgG antibody (green, bs-60295G-BF488) at 37°C for 90 min, DAPI (blue, C02-04002) was used to stain the cell nuclei. PBS instead of the primary antibody was used as the blank control.



The HeLa (H) cells were fixed with 4% PFA (10 min at r.t.) and then permeabilized with 90% ice-cold methanol for 20 min at -20°C, the cells then were incubated in 5% BSA to block non-specific protein-protein interactions (30 min at r.t.), followed by secondary antibody incubation for 40 min at room temperature. Primary Antibody (green): Rabbit Anti-GLO1 antibody (bsm-61735R, 1:100); Isotype Control (orange): Rabbit IgG (bs-0295P). Blank control (black): PBS. Acquisition of 20,000 events was performed.