

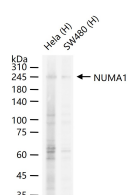
**bsm-61733R****[ Primary Antibody ]****NUMA1 Recombinant Rabbit mAb****Bioss**  
ANTIBODIES

www.bioss.com.cn

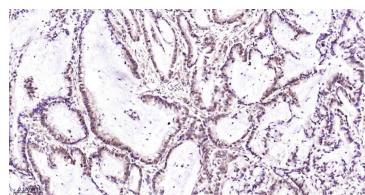
sales@bioss.com.cn

techsupport@bioss.com.cn

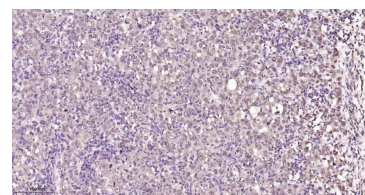
400-901-9800

**— DATASHEET —****Host:** Rabbit**Clonality:** Recombinant**GeneID:** 4926**Target:** NUMA1**Purification:** affinity purified by Protein A**Storage:** 0.01M TBS (pH7.4) with 1% BSA, 0.02% Proclin300 and 50% Glycerol. Store at 4°C for short term. Store at -20°C for long term. Avoid repeated freeze/thaw cycles.**Background:** Microtubule (MT)-binding protein that plays a role in the formation and maintenance of the spindle poles and the alignment and the segregation of chromosomes during mitotic cell division. Functions to tether the minus ends of MTs at the spindle poles, which is critical for the establishment and maintenance of the spindle poles**Isotype:** IgG**CloneNo.:** 10G4**SWISS:** Q14980**Applications:** WB (1:500-2000)**IHC-P** (1:100-500)**IHC-F** (1:100-500)**IF** (1:100-500)**Flow-Cyt** (1µg/Test)**ICC/IF** (1:50-200)**ELISA** (1:5000-20000)**Reactivity:** Human, Mouse, Rat**Predicted  
MW.:** 238**Subcellular  
Location:** Cytoplasm ,Nucleus**— VALIDATION IMAGES —**

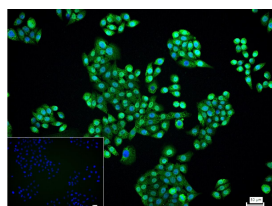
25 µg total protein per lane of various lysates (see on figure) probed with NUMA1 monoclonal antibody, unconjugated (bsm-61733R) at 1:1000 dilution and 4°C overnight incubation. Followed by conjugated secondary antibody incubation at r.t. for 60 min.



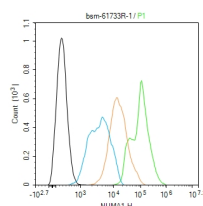
Paraformaldehyde-fixed, paraffin embedded Human gastric cancer; Antigen retrieval by boiling in sodium citrate buffer (pH6.0) for 15 min; Antibody incubation with NUMA1 Monoclonal Antibody, Unconjugated (bsm-61733R) at 1:200 overnight at 4°C, followed by conjugation to the bs-0295G-HRP and DAB (C-0010) staining.



Paraformaldehyde-fixed, paraffin embedded Human Breast Cancer; Antigen retrieval by boiling in sodium citrate buffer (pH6.0) for 15 min; Antibody incubation with NUMA1 Monoclonal Antibody, Unconjugated (bsm-61733R) at 1:200 overnight at 4°C, followed by conjugation to the bs-0295G-HRP and DAB (C-0010) staining.



4% Paraformaldehyde-fixed MCF-7 (H) cell; Triton X-100 at r.t. for 20 min; Antibody incubation with (NUMA1) monoclonal Antibody, unconjugated (bsm-61733R) 1:100, 90 min at 37°C; followed by conjugated Goat Anti-Rabbit IgG antibody (green, bs-40295G-FITC) at 37°C for 90 min, DAPI (blue, C02-04002) was used to stain the cell nuclei. PBS instead of the primary antibody was used as the blank control.



The HeLa (H) cells were fixed with 4% PFA (10 min at r.t.) and then permeabilized with 90% ice-cold methanol for 20 min at -20°C, the cells then were incubated in 5% BSA to block non-specific protein-protein interactions (30 min at r.t.). Primary Antibody (green): Rabbit Anti-NUMA1 antibody (bsm-61733R, 1:100); Secondary Antibody (white blue): Goat anti-Rabbit IgG-BF488 (bs-60295G-BF488): 1 µg/test. Isotype Control (orange): Rabbit IgG (bs-0295P). Blank control (black): PBS. Acquisition of 20,000 events was performed.