

bsm-61732R**[Primary Antibody]****beta Defensin 1 Recombinant Rabbit mAb****BioSS**
ANTIBODIES

www.bioss.com.cn

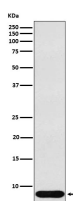
sales@bioss.com.cn

techsupport@bioss.com.cn

400-901-9800

— DATASHEET —

Host: Rabbit	Isotype: IgG	Applications: WB (1:500-2000)
Clonality: Recombinant		Reactivity: Human
GeneID: 1672	SWISS: P60022	
Target: beta Defensin 1		
Immunogen: A synthesized peptide derived from human beta Defensin 1: 30-68/68.		Predicted MW.: 7
Purification: affinity purified by Protein A		Subcellular Location: Secreted
Storage: 10mM phosphate buffered saline(pH 7.4) with 150mM sodium chloride, 0.05% BSA, 0.02% Proclin300 and 50% glycerol. Store at 4°C for short term. Store at -20°C for long term. Avoid repeated freeze/thaw cycles.		
Background: Has bactericidal activity. May act as a ligand for C-C chemokine receptor CCR6. Positively regulates the sperm motility and bactericidal activity in a CCR6-dependent manner. Binds to CCR6 and triggers Ca ²⁺ mobilization in the sperm which is important for its motility.		

— VALIDATION IMAGES —

Western blot analysis of Human recombinant beta Defensin 1 lysate. Using beta Defensin 1 (bsm-61732R) monoclonal antibody at 1:1000 dilution and 4°C overnight incubation. Followed by conjugated secondary antibody incubation at r.t. for 60 min.