

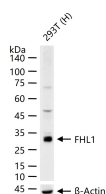
bsm-61727R**[Primary Antibody]****BioSS**
ANTIBODIES

www.bioss.com.cn

sales@bioss.com.cn

techsupport@bioss.com.cn

400-901-9800

FHL1 Recombinant Rabbit mAb**— DATASHEET —****Host:** Rabbit**Isotype:** IgG**Clonality:** Recombinant**CloneNo.:** 6F1**GeneID:** 2273**SWISS:** Q13642**Target:** FHL1**Immunogen:** A synthesized peptide derived from human FHL 1: 8-52.**Purification:** affinity purified by Protein A**Storage:** 10mM phosphate buffered saline(pH 7.4) with 150mM sodium chloride, 0.05% BSA, 0.02% Proclin300 and 50% glycerol.
Store at 4°C for short term. Store at -20°C for long term. Avoid repeated freeze/thaw cycles.**Background:** May have an involvement in muscle development or hypertrophy.**Applications:** WB (1:500-2000)**IHC-P** (1:50-200)**IHC-F** (1:50-200)**IF** (1:50-200)**IP** (1:20-50)**Reactivity:** Human (predicted: Mouse, Rat)**Predicted
MW.:** 36**Subcellular
Location:** Cytoplasm ,Nucleus**— VALIDATION IMAGES —**

25 ug total protein per lane of various lysates
(see on figure) probed with FHL1 monoclonal
antibody, unconjugated (bsm-61727R) at 1:1000
dilution and 4°C overnight incubation. Followed
by conjugated secondary antibody incubation at
r.t. for 60 min.