

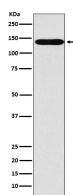
bsm-61723R**[Primary Antibody]****BioSS**
ANTIBODIES

www.bioss.com.cn

sales@bioss.com.cn

techsupport@bioss.com.cn

400-901-9800

NHE1 Recombinant Rabbit mAb**— DATASHEET —****Host:** Rabbit**Isotype:** IgG**Clonality:** Recombinant**CloneNo.:** 1C12**GeneID:** 6548**SWISS:** P19634**Target:** NHE1**Immunogen:** A synthesized peptide derived from human SLC9A1: 50-100.**Purification:** affinity purified by Protein A**Storage:** 10mM phosphate buffered saline(pH 7.4) with 150mM sodium chloride, 0.05% BSA, 0.02% Proclin300 and 50% glycerol.
Store at 4°C for short term. Store at -20°C for long term. Avoid repeated freeze/thaw cycles.**Background:** Electroneutral Na⁺ /H⁺ antiporter that extrudes Na⁺ in exchange for external protons driven by the inward sodium ion chemical gradient, protecting cells from acidification that occurs from metabolism.**Applications:** WB (1:1000-2000)**Reactivity:** Human**Predicted
MW.:** 91**Subcellular
Location:** Cell membrane**— VALIDATION IMAGES —**

Western blot analysis of MOLT4 cell lysate. Using NHE1 (bsm-61723R) monoclonal antibody at 1:1000 dilution and 4°C overnight incubation. Followed by conjugated secondary antibody incubation at r.t. for 60 min.