

bsm-61704R**[Primary Antibody]****KPNA2 Recombinant Rabbit mAb****BioSS**
ANTIBODIES

www.bioss.com.cn

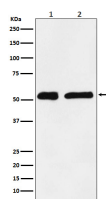
sales@bioss.com.cn

techsupport@bioss.com.cn

400-901-9800

— DATASHEET —

Host: Rabbit	Isotype: IgG	Applications: WB (1:500-2000) Flow-Cyt (1:50-100)
Clonality: Recombinant		Reactivity: Human, Mouse, Rat
GeneID: 3838	SWISS: P52292	
Target: KPNA2		
Immunogen: A synthesized peptide derived from human KPNA2: 50-100/529.		
Purification: affinity purified by Protein A		Predicted MW.: 58
Storage: 10mM phosphate buffered saline(pH 7.4) with 150mM sodium chloride, 0.05% BSA, 0.02% Proclin300 and 50% glycerol. Store at 4°C for short term. Store at -20°C for long term. Avoid repeated freeze/thaw cycles.		Subcellular Location: Cytoplasm ,Nucleus
Background: Functions in nuclear protein import as an adapter protein for nuclear receptor KPNB1. Binds specifically and directly to substrates containing either a simple or bipartite NLS motif.		

— VALIDATION IMAGES —

Western blot analysis of (1) HeLa cell lysate; (2) C6 cell lysate. Using KPNA2 (bsm-61704R) monoclonal antibody at 1:1000 dilution and 4°C overnight incubation. Followed by conjugated secondary antibody incubation at r.t. for 60 min.