

**[ Primary Antibody ]**

## PGC1 beta Recombinant Rabbit mAb



**BioSS**  
ANTIBODIES

www.bioss.com.cn

sales@bioass.com.cn

techsupport@bioss.com.cn

400-901-9800

## — DATASHEET

**Host:** Rabbit

**Isotype:** IgG

**Clonality:** Recombinant

**CloneNo.:** 19E18

**GeneID:** 133522

**SWISS:** O86YN6

**Target:** PGC1 beta

**Immunogen:** A synthesized peptide derived from human PGC1 beta: 970-1023.

**Purification:** affinity purified by Protein A

**Storage:** 10mM phosphate buffered saline(pH 7.4) with 150mM sodium chloride, 0.05% BSA, 0.02% Proclin300 and 50% glycerol. Store at 4°C for short term. Store at -20°C for long term. Avoid repeated freeze/thaw cycles.

**Background:** Plays a role of stimulator of transcription factors and nuclear receptors activities. Activates transcriptional activity of estrogen receptor alpha, nuclear respiratory factor 1 (NRF1) and glucocorticoid receptor in the presence of glucocorticoids. May play a role in constitutive non-adrenergic-mediated mitochondrial biogenesis as suggested by increased basal oxygen consumption and mitochondrial number when overexpressed.

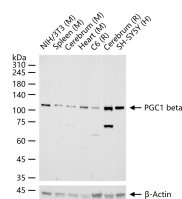
**Applications: WB** (1:500-2000)  
**IP** (1:20-50)

**Reactivity:** Human, Mouse, Rat

**Predicted**  
**MW.:** 113

**Subcellular Location:** Nucleus

— VALIDATION IMAGES



25 ug total protein per lane of various lysates (see on figure) probed with PGC1 beta monoclonal antibody, unconjugated (bsm-61701R) at 1:1000 dilution and 4°C overnight incubation. Followed by conjugated secondary antibody incubation at r.t. for 60 min.