

bsm-61694R**[Primary Antibody]****BioSS**
ANTIBODIES

www.bioss.com.cn

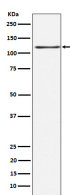
sales@bioss.com.cn

techsupport@bioss.com.cn

400-901-9800

KSR1 Recombinant Rabbit mAb**— DATASHEET —**

| | | |
|--|----------------------|---|
| Host: Rabbit | Isotype: IgG | Applications: WB (1:1000-2000) IHC-P (1:100-200) IHC-F (1:100-200) IF (1:50-200) Flow-Cyt (1:50-100) ICC/IF (1:50-200) Reactivity: Human, Mouse Predicted MW.: 102 Subcellular Location: Cell membrane ,Cytoplasm |
| Clonality: Recombinant | | |
| GeneID: 8844 | SWISS: Q8IVT5 | |
| Target: KSR1 | | |
| Immunogen: A synthesized peptide derived from human KSR1: 880-923/923. | | |
| Purification: affinity purified by Protein A | | |
| Storage: 10mM phosphate buffered saline(pH 7.4) with 150mM sodium chloride, 0.05% BSA, 0.02% Proclin300 and 50% glycerol. Store at 4°C for short term. Store at -20°C for long term. Avoid repeated freeze/thaw cycles. | | |
| Background: Part of a multiprotein signaling complex which promotes phosphorylation of Raf family members and activation of downstream MAP kinases. Independently of its kinase activity, acts as MAP2K1/MEK1 and MAP2K2/MEK2-dependent allosteric activator of BRAF; upon binding to MAP2K1/MEK1 or MAP2K2/MEK2, dimerizes with BRAF and promotes BRAF-mediated phosphorylation of MAP2K1/MEK1 and/or MAP2K2/MEK2. | | |

— VALIDATION IMAGES —

Western blot analysis of HEK293 cell lysate.
Using KSR1 (bsm-61694R) monoclonal antibody
at 1:1000 dilution and 4°C overnight incubation.
Followed by conjugated secondary antibody
incubation at r.t. for 60 min.