

bsm-61693R

[Primary Antibody]

PFKFB3/PFK2 Recombinant Rabbit mAb

BioSS
ANTIBODIES

www.bioss.com.cn

sales@bioss.com.cn

techsupport@bioss.com.cn

400-901-9800

— DATASHEET —

Host: Rabbit

Isotype: IgG

Clonality: Recombinant

CloneNo.: 3F10

GeneID: 5209

SWISS: Q16875

Target: PFKFB3/PFK2

Immunogen: A synthesized peptide derived from human PFKFB3: 300-520.

Purification: affinity purified by Protein A

Storage: 10mM phosphate buffered saline(pH 7.4) with 150mM sodium chloride, 0.05% BSA, 0.02% Proclin300 and 50% glycerol. Store at 4°C for short term. Store at -20°C for long term. Avoid repeated freeze/thaw cycles.

Background: Catalyzes both the synthesis and degradation of fructose 2,6-bisphosphate.

Applications: WB (1:500-2000)

IHC-P (1:50-200)

IHC-F (1:50-200)

IF (1:50-200)

Flow-Cyt (1:50-100)

ICC/IF (1:50-200)

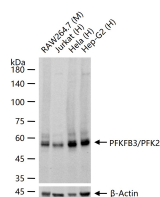
IP (1:20-50)

Reactivity: Human, Mouse, Rat

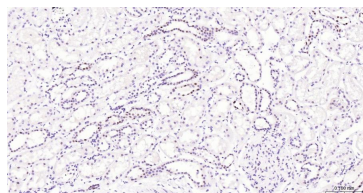
**Predicted
MW.:** 60

**Subcellular
Location:** Cytoplasm ,Nucleus

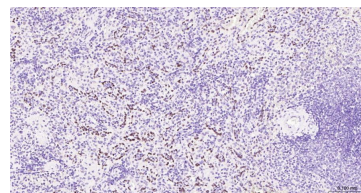
— VALIDATION IMAGES —



25 ug total protein per lane of various lysates (see on figure) probed with PFKFB3/PFK2 monoclonal antibody, unconjugated (bsm-61693R) at 1:2000 dilution and 4°C overnight incubation. Followed by conjugated secondary antibody incubation at r.t. for 60 min.



Paraformaldehyde-fixed, paraffin embedded Human kidney; Antigen retrieval by boiling in sodium citrate buffer (pH6.0) for 15 min; Antibody incubation with PFKFB3/PFK2 Monoclonal Antibody, Unconjugated(bsm-61693R) at 1:200 overnight at 4°C, followed by conjugation to the bs-0295G-HRP and DAB (C-0010) staining.



Paraformaldehyde-fixed, paraffin embedded Human spleen; Antigen retrieval by boiling in sodium citrate buffer (pH6.0) for 15 min; Antibody incubation with PFKFB3/PFK2 Monoclonal Antibody, Unconjugated(bsm-61693R) at 1:200 overnight at 4°C, followed by conjugation to the bs-0295G-HRP and DAB (C-0010) staining.