

bsm-61691R**[Primary Antibody]****MYBBP1A Recombinant Rabbit mAb****Bioss**
ANTIBODIES

www.bioss.com.cn

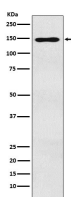
sales@bioss.com.cn

techsupport@bioss.com.cn

400-901-9800

— DATASHEET —

Host: Rabbit	Isotype: IgG	Applications: WB (1:1000-2000) IHC-P (1:100-200) IHC-F (1:100-200) IF (1:50-200) Flow-Cyt (1:50-100) ICC/IF (1:50-200) Reactivity: Human Predicted MW.: 149 Subcellular Location: Cytoplasm ,Nucleus
Clonality: Recombinant		
GeneID: 2617	SWISS: P41250	
Target: MYBBP1A		
Immunogen: A synthesized peptide derived from human Myb binding protein 1A: 1050-1100/1328.		
Purification: affinity purified by Protein A		
Storage: 10mM phosphate buffered saline(pH 7.4) with 150mM sodium chloride, 0.05% BSA, 0.02% Proclin300 and 50% glycerol. Store at 4°C for short term. Store at -20°C for long term. Avoid repeated freeze/thaw cycles.		
Background: May activate or repress transcription via interactions with sequence specific DNA-binding proteins.Repression may be mediated at least in part by histone deacetylase activity.Acts as a corepressor and in concert with CRY1, represses the transcription of the core circadian clock component PER2.		

— VALIDATION IMAGES —

Western blot analysis of HEK293 cell lysate.
Using MYBBP1A (bsm-61691R) monoclonal antibody at 1:1000 dilution and 4°C overnight incubation. Followed by conjugated secondary antibody incubation at r.t. for 60 min.