

bsm-61685R**[Primary Antibody]**

Atrial natriuretic factor Recombinant Rabbit mAb

BioSS
ANTIBODIES

www.bioss.com.cn

sales@bioss.com.cn

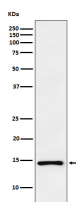
techsupport@bioss.com.cn

400-901-9800

— DATASHEET —

Host: Rabbit	Isotype: IgG	Applications: WB (1:500-2000) IP (1:20-50)
Clonality: Recombinant		
GeneID: 4878	SWISS: P01160	Reactivity: Human
Target: Atrial natriuretic factor		
Immunogen: A synthesized peptide derived from human Natriuretic peptides A: 100-151/151.		Predicted MW.: 16
Purification: affinity purified by Protein A		Subcellular Location: Secreted
Storage: 10mM phosphate buffered saline(pH 7.4) with 150mM sodium chloride, 0.05% BSA, 0.02% Proclin300 and 50% glycerol. Store at 4°C for short term. Store at -20°C for long term. Avoid repeated freeze/thaw cycles.		
Background: Hormone that plays a key role in mediating cardio-renal homeostasis, and is involved in vascular remodeling and regulating energy metabolism.		

— VALIDATION IMAGES —



Western blot analysis of PC3 cell lysate. Using Atrial natriuretic factor (bsm-61685R) monoclonal antibody at 1:1000 dilution and 4°C overnight incubation. Followed by conjugated secondary antibody incubation at r.t. for 60 min.