

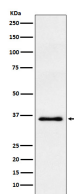
**bsm-61682R****[ Primary Antibody ]**

www.bioss.com.cn

sales@bioss.com.cn

techsupport@bioss.com.cn

400-901-9800

**WDR5 Recombinant Rabbit mAb****— DATASHEET —****Host:** Rabbit**Isotype:** IgG**Clonality:** Recombinant**GeneID:** 11091**SWISS:** P61964**Target:** WDR5**Immunogen:** A synthesized peptide derived from human WDR5: 302-334/334.**Purification:** affinity purified by Protein A**Storage:** 10mM phosphate buffered saline(pH 7.4) with 150mM sodium chloride, 0.05% BSA, 0.02% Proclin300 and 50% glycerol.  
Store at 4°C for short term. Store at -20°C for long term. Avoid repeated freeze/thaw cycles.**Background:** Contributes to histone modification. May position the N-terminus of histone H3 for efficient trimethylation at 'Lys-4'. As part of the MLL1/MLL complex it is involved in methylation and dimethylation at 'Lys-4' of histone H3. H3 'Lys-4' methylation represents a specific tag for epigenetic transcriptional activation.**Applications:** **WB** (1:1000-2000)**IHC-P** (1:100-200)**IHC-F** (1:100-200)**IF** (1:100-200)**Flow-Cyt** (1:50-100)**Reactivity:** Human, Mouse, Rat**Predicted MW.:** 37**— VALIDATION IMAGES —**

Western blot analysis of HeLa cell lysate. Using WDR5 (bsm-61682R) monoclonal antibody at 1:1000 dilution and 4°C overnight incubation. Followed by conjugated secondary antibody incubation at r.t. for 60 min.