

bsm-61675R**[Primary Antibody]****BioSS**
ANTIBODIES

www.bioss.com.cn

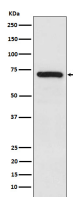
sales@bioss.com.cn

techsupport@bioss.com.cn

400-901-9800

TRIM25 Recombinant Rabbit mAb**— DATASHEET —**

Host: Rabbit	Isotype: IgG	Applications: WB (1:500-2000) IHC-P (1:50-200) IHC-F (1:50-200) IF (1:50-200) Flow-Cyt (1:50-100) ICC/IF (1:50-200) IP (1:20-50) Reactivity: Human, Mouse, Rat Predicted MW.: 71 Subcellular Location: Cytoplasm ,Nucleus
Clonality: Recombinant		
GeneID: 7706	SWISS: Q14258	
Target: TRIM25		
Immunogen: A synthesized peptide derived from human TRIM25: 100-157.		
Purification: affinity purified by Protein A		
Storage: 10mM phosphate buffered saline(pH 7.4) with 150mM sodium chloride, 0.05% BSA, 0.02% Proclin300 and 50% glycerol. Store at 4°C for short term. Store at -20°C for long term. Avoid repeated freeze/thaw cycles.		
Background: Functions as an ubiquitin E3 ligase and as an ISG15 E3 ligase. Involved in innate immune defense against viruses by mediating ubiquitination of DDX58. Mediates 'Lys-63'-linked polyubiquitination of the DDX58 N-terminal CARD-like region which is crucial for triggering the cytosolic signal transduction that leads to the production of interferons in response to viral infection.		

— VALIDATION IMAGES —

Western blot analysis of HeLa cell lysate. Using TRIM25 (bsm-61675R) monoclonal antibody at 1:1000 dilution and 4°C overnight incubation. Followed by conjugated secondary antibody incubation at r.t. for 60 min.