

bsm-61660R**[Primary Antibody]****BioSS**
ANTIBODIES

www.bioss.com.cn

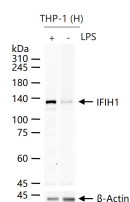
sales@bioss.com.cn

techsupport@bioss.com.cn

400-901-9800

IFIH1 Recombinant Rabbit mAb**— DATASHEET —**

Host: Rabbit	Isotype: IgG	Applications: WB (1:500-2000) ICC/IF (1:50-200) Reactivity: Human Predicted MW.: 117 Subcellular Location: Cytoplasm ,Nucleus
Clonality: Recombinant	CloneNo.: 5B1	
GeneID: 64135	SWISS: Q9BYX4	
Target: IFIH1		
Immunogen: A synthesized peptide derived from human MDA5: 950-1025.		
Purification: affinity purified by Protein A		
Storage: 10mM phosphate buffered saline(pH 7.4) with 150mM sodium chloride, 0.05% BSA, 0.02% Proclin300 and 50% glycerol. Store at 4°C for short term. Store at -20°C for long term. Avoid repeated freeze/thaw cycles.		
Background: Innate immune receptor which acts as a cytoplasmic sensor of viral nucleic acids and plays a major role in sensing viral infection and in the activation of a cascade of antiviral responses including the induction of type I interferons and pro-inflammatory cytokines		

— VALIDATION IMAGES —

THP-1 (H) cells were treated with or without LPS (1 µg/ml) for 24 h, 25 µg total protein per lane of cell lysates (see on figure) probed with IFIH1 monoclonal antibody, unconjugated (bsm-61660R) at 1:1000 dilution and 4°C overnight incubation. Followed by conjugated secondary antibody incubation at r.t. for 60 min.