

**bsm-61658R****[ Primary Antibody ]**

www.bioss.com.cn

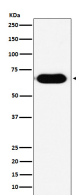
sales@bioss.com.cn

techsupport@bioss.com.cn

400-901-9800

**RNF8 Recombinant Rabbit mAb****— DATASHEET —**

<b>Host:</b> Rabbit	<b>Isotype:</b> IgG	<b>Applications:</b> WB (1:1000-2000)
<b>Clonality:</b> Recombinant		<b>Reactivity:</b> Human, Rat
<b>GeneID:</b> 9025	<b>SWISS:</b> O76064	
<b>Target:</b> RNF8		
<b>Immunogen:</b> A synthesized peptide derived from human RNF8: 420-485/485.		<b>Predicted MW.:</b> 56
<b>Purification:</b> affinity purified by Protein A		<b>Subcellular Location:</b> Nucleus
<b>Storage:</b> 10mM phosphate buffered saline(pH 7.4) with 150mM sodium chloride, 0.05% BSA, 0.02% Proclin300 and 50% glycerol. Store at 4°C for short term. Store at -20°C for long term. Avoid repeated freeze/thaw cycles.		
<b>Background:</b> E3 ubiquitin-protein ligase that plays a key role in DNA damage signaling via 2 distinct roles: by mediating the 'Lys-63'-linked ubiquitination of histones H2A and H2AX and promoting the recruitment of DNA repair proteins at double-strand breaks (DSBs) sites, and by catalyzing 'Lys-48'-linked ubiquitination to remove target proteins from DNA damage sites.		

**— VALIDATION IMAGES —**

Western blot analysis of human fetal kidney lysate. Using RNF8 (bsm-61658R) monoclonal antibody at 1:1000 dilution and 4°C overnight incubation. Followed by conjugated secondary antibody incubation at r.t. for 60 min.