

bsm-61643R**[Primary Antibody]****BioSS**
ANTIBODIES

www.bioss.com.cn

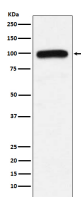
sales@bioss.com.cn

techsupport@bioss.com.cn

400-901-9800

UBE3A Recombinant Rabbit mAb**— DATASHEET —**

Host: Rabbit	Isotype: IgG	Applications: WB (1:1000-2000)
Clonality: Recombinant		Reactivity: Human, Mouse, Rat
GeneID: 7337	SWISS: Q05086	
Target: UBE3A		
Immunogen: A synthesized peptide derived from human UBE3A: 820-875/875.		Predicted MW.: 101
Purification: affinity purified by Protein A		Subcellular Location: Nucleus
Storage: 10mM phosphate buffered saline(pH 7.4) with 150mM sodium chloride, 0.05% BSA, 0.02% Proclin300 and 50% glycerol. Store at 4°C for short term. Store at -20°C for long term. Avoid repeated freeze/thaw cycles.		
Background: E3 ubiquitin-protein ligase which accepts ubiquitin from an E2 ubiquitin-conjugating enzyme in the form of a thioester and transfers it to its substrates. Several substrates have been identified including the RAD23A and RAD23B, MCM7 (which is involved in DNA replication), annexin A1, the PML tumor suppressor, and the cell cycle regulator CDKN1B.		

— VALIDATION IMAGES —

Western blot analysis of K562 cell lysate. Using UBE3A (bsm-61643R) monoclonal antibody at 1:1000 dilution and 4°C overnight incubation. Followed by conjugated secondary antibody incubation at r.t. for 60 min.