

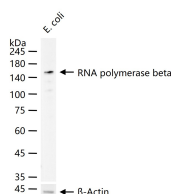
**bsm-61640R****[ Primary Antibody ]****BioSS**  
**ANTIBODIES**

www.bioss.com.cn

sales@bioss.com.cn

techsupport@bioss.com.cn

400-901-9800

**RNA polymerase beta Recombinant Rabbit mAb****— DATASHEET —****Host:** Rabbit**Isotype:** IgG**Clonality:** Recombinant**CloneNo.:** 6H1**Target:** RNA polymerase beta**Immunogen:** A synthesized peptide derived from RNA polymerase beta:  
1300-1342/1342.**Purification:** affinity purified by Protein A**Storage:** 10mM phosphate buffered saline(pH 7.4) with 150mM sodium chloride, 0.05% BSA, 0.02% Proclin300 and 50% glycerol.  
Store at 4°C for short term. Store at -20°C for long term. Avoid repeated freeze/thaw cycles.**Background:** DNA-dependent RNA polymerase (RNAP) catalyzes the transcription of DNA into RNA using the four ribonucleoside triphosphates as substrates. Resistance to the antibiotics salinamide A, salinamide B, rifampicin, streptolydigin, CBR703, myxopyronin, and lipiarmycin can result from mutations in this protein.**Applications:** **WB** (1:500-2000)  
**IP** (1:20-50)**Reactivity:** Escherichia Coli**Predicted MW.:** 151**— VALIDATION IMAGES —**

25 ug total protein per lane of various lysates (see on figure) probed with RNA polymerase beta monoclonal antibody, unconjugated (bsm-61640R) at 1:1000 dilution and 4°C overnight incubation. Followed by conjugated secondary antibody incubation at r.t. for 60 min.