

bsm-61639R**[Primary Antibody]****PKC eta/PRKCL Recombinant Rabbit mAb****Bioss**
ANTIBODIES

www.bioss.com.cn

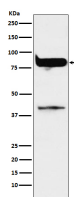
sales@bioss.com.cn

techsupport@bioss.com.cn

400-901-9800

— DATASHEET —

Host: Rabbit	Isotype: IgG	Applications: WB (1:1000-2000) IP (1:20-50)
Clonality: Recombinant		Reactivity: Human, Mouse, Rat
GeneID: 5583	SWISS: P24723	
Target: PKC eta/PRKCL		
Immunogen: A synthesized peptide derived from human PKC eta: 610-683/683.		
Purification: affinity purified by Protein A		Predicted MW.: 78
Storage: 10mM phosphate buffered saline(pH 7.4) with 150mM sodium chloride, 0.05% BSA, 0.02% Proclin300 and 50% glycerol. Store at 4°C for short term. Store at -20°C for long term. Avoid repeated freeze/thaw cycles.		Subcellular Location: Cell membrane ,Cytoplasm
Background: PKC is activated by diacylglycerol which in turn phosphorylates a range of cellular proteins. PKC also serves as the receptor for phorbol esters, a class of tumor promoters.		

— VALIDATION IMAGES —

Western blot analysis of MCF7 cell lysate. Using PKC eta/PRKCL (bsm-61639R) monoclonal antibody at 1:1000 dilution and 4°C overnight incubation. Followed by conjugated secondary antibody incubation at r.t. for 60 min.