

**bsm-61634R****[ Primary Antibody ]****Insulin Receptor R Recombinant Rabbit mAb****Bioss**  
**ANTIBODIES**

www.bioss.com.cn

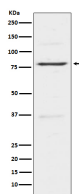
sales@bioss.com.cn

techsupport@bioss.com.cn

400-901-9800

**— DATASHEET —**

<b>Host:</b> Rabbit	<b>Isotype:</b> IgG	<b>Applications:</b> <b>WB</b> (1:1000-2000)
<b>Clonality:</b> Recombinant		<b>IHC-P</b> (1:100-200)
<b>GeneID:</b> 3645	<b>SWISS:</b> P14616	<b>IHC-F</b> (1:100-200)
<b>Target:</b> Insulin Receptor R		<b>IF</b> (1:100-200)
<b>Immunogen:</b> A synthesized peptide derived from human Insulin receptor related protein: 3-64.		<b>Reactivity:</b> Human, Mouse, Rat
<b>Purification:</b> affinity purified by Protein A		
<b>Storage:</b> 10mM phosphate buffered saline(pH 7.4) with 150mM sodium chloride, 0.05% BSA, 0.02% Proclin300 and 50% glycerol. Store at 4°C for short term. Store at -20°C for long term. Avoid repeated freeze/thaw cycles.		<b>Predicted MW.:</b> 144
<b>Background:</b> Receptor with tyrosine-protein kinase activity. Functions as a pH sensing receptor which is activated by increased extracellular pH. Activates an intracellular signaling pathway that involves IRS1 and AKT1/PKB.		<b>Subcellular Location:</b> Cell membrane

**— VALIDATION IMAGES —**

Western blot analysis of Hela cell lysate. Using Insulin Receptor R (bsm-61634R) monoclonal antibody at 1:1000 dilution and 4°C overnight incubation. Followed by conjugated secondary antibody incubation at r.t. for 60 min.