

bsm-61633R**[Primary Antibody]****BioSS**
ANTIBODIES

www.bioss.com.cn

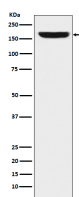
sales@bioss.com.cn

techsupport@bioss.com.cn

400-901-9800

REST Recombinant Rabbit mAb**— DATASHEET —**

| | | |
|--|----------------------|---------------------------------------|
| Host: Rabbit | Isotype: IgG | Applications: WB (1:1000-2000) |
| Clonality: Recombinant | | Reactivity: Human |
| GeneID: 5978 | SWISS: Q13127 | |
| Target: NRSF | | |
| Immunogen: A synthesized peptide derived from human REST: 100-170/1097. | | Predicted MW.: 122 |
| Purification: affinity purified by Protein A | | Subcellular Location: Nucleus |
| Storage: 10mM phosphate buffered saline(pH 7.4) with 150mM sodium chloride, 0.05% BSA, 0.02% Proclin300 and 50% glycerol. Store at 4°C for short term. Store at -20°C for long term. Avoid repeated freeze/thaw cycles. | | |
| Background: Transcriptional repressor which binds neuron-restrictive silencer element (NRSE) and represses neuronal gene transcription in non-neuronal cells. Restricts the expression of neuronal genes by associating with two distinct corepressors, mSin3 and CoREST, which in turn recruit histone deacetylase to the promoters of REST-regulated genes. | | |

— VALIDATION IMAGES —

Western blot analysis of HeLa cell lysate. Using NRSF (bsm-61633R) monoclonal antibody at 1:1000 dilution and 4°C overnight incubation. Followed by conjugated secondary antibody incubation at r.t. for 60 min.