

bsm-61630R

[Primary Antibody]

Placental alkaline phosphatase (PLAP) Recombinant Rabbit mAb

Bioss
ANTIBODIES

www.bioss.com.cn

sales@bioss.com.cn

techsupport@bioss.com.cn

400-901-9800

— DATASHEET —

Host: Rabbit

Isotype: IgG

Clonality: Recombinant

CloneNo.: 18C1

GeneID: 250

SWISS: P05187

Target: Placental alkaline phosphatase (PLAP)

Immunogen: A synthesized peptide derived from human ALPP: 154-214.

Purification: affinity purified by Protein A

Storage: 10mM phosphate buffered saline(pH 7.4) with 150mM sodium chloride, 0.05% BSA, 0.02% Proclin300 and 50% glycerol. Store at 4°C for short term. Store at -20°C for long term. Avoid repeated freeze/thaw cycles.

Background: Alkaline phosphatase that can hydrolyze various phosphate compounds.

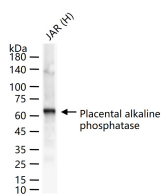
Applications: **WB** (1:500-2000)
IHC-P (1:100-500)
IHC-F (1:100-500)
IF (1:100-500)
ICC/IF (1:50-200)

Reactivity: Human

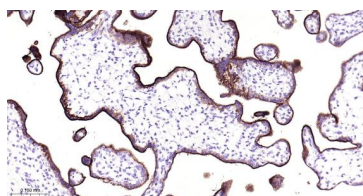
**Predicted
MW.:** 58

**Subcellular
Location:** Cell membrane

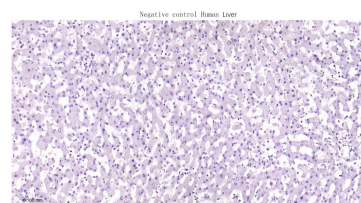
— VALIDATION IMAGES —



25 ug total protein per lane of various lysates (see on figure) probed with Placental alkaline phosphatase (PLAP) monoclonal antibody, unconjugated (bsm-61630R) at 1:2000 dilution and 4°C overnight incubation. Followed by conjugated secondary antibody incubation at r.t. for 60 min.



Paraformaldehyde-fixed, paraffin embedded Human Placenta; Antigen retrieval by boiling in sodium citrate buffer (pH6.0) for 15 min; Antibody incubation with Placental alkaline phosphatase (PLAP) Monoclonal Antibody, Unconjugated(bsm-61630R) at 1:200 overnight at 4°C, followed by conjugation to the bs-0295G-HRP and DAB (C-0010) staining.



(Negative control) Paraformaldehyde-fixed, paraffin embedded Human Liver; Antigen retrieval by boiling in sodium citrate buffer (pH6.0) for 15 min; Antibody incubation with Placental alkaline phosphatase (PLAP) Monoclonal Antibody, Unconjugated(bsm-61630R) at 1:200 overnight at 4°C, followed by conjugation to the bs-0295G-HRP and DAB (C-0010) staining.