

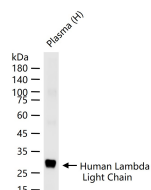
bsm-61628R**[Primary Antibody]****BioSS**
ANTIBODIES

www.bioss.com.cn

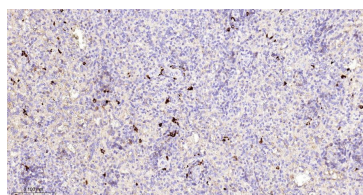
sales@bioss.com.cn

techsupport@bioss.com.cn

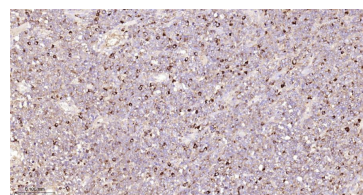
400-901-9800

Human Lambda Light Chain Recombinant Rabbit mAb**DATASHEET****Host:** Rabbit**Isotype:** IgG**Clonality:** Recombinant**CloneNo.:** 1G7**GeneID:** 3535**SWISS:** P0CG04**Target:** Human Lambda Light Chain**Immunogen:** A synthesized peptide derived from human Human Ig lambda light chain: IgA from human colostrum(Sigma#I1010).**Purification:** affinity purified by Protein A**Storage:** 10mM phosphate buffered saline(pH 7.4) with 150mM sodium chloride, 0.05% BSA, 0.02% Proclin300 and 50% glycerol. Store at 4°C for short term. Store at -20°C for long term. Avoid repeated freeze/thaw cycles.**Background:** Constant region of immunoglobulin light chains. Immunoglobulins, also known as antibodies, are membrane-bound or secreted glycoproteins produced by B lymphocytes.**Applications:** **WB** (1:1000-5000)**IHC-P** (1:200-1000)**IHC-F** (1:200-1000)**IF** (1:200-1000)**Flow-Cyt** (1:50-100)**ICC/IF** (1:50-200)**Reactivity:** Human**Predicted MW.:** 11**Subcellular Location:** Secreted**VALIDATION IMAGES**

25 ug total protein per lane of various lysates (see on figure) probed with Human Lambda Light Chain monoclonal antibody, unconjugated (bsm-61628R) at 1:1000 dilution and 4°C overnight incubation. Followed by conjugated secondary antibody incubation at r.t. for 60 min.



Paraformaldehyde-fixed, paraffin embedded Human Spleen; Antigen retrieval by boiling in sodium citrate buffer (pH6.0) for 15 min; The section was incubated with Human Lambda Light Chain Monoclonal Antibody, Unconjugated (bsm-61628R) at 1:200 overnight at 4°C, followed by conjugation to the bs-0295G-HRP and DAB (C-0010) staining.



Paraformaldehyde-fixed, paraffin embedded Human Lymph; Antigen retrieval by boiling in sodium citrate buffer (pH6.0) for 15 min; The section was incubated with Human Lambda Light Chain Monoclonal Antibody, Unconjugated (bsm-61628R) at 1:200 overnight at 4°C, followed by conjugation to the bs-0295G-HRP and DAB (C-0010) staining.