

bsm-61626R**[Primary Antibody]**

Bioss
ANTIBODIES

www.bioss.com.cn

sales@bioss.com.cn

techsupport@bioss.com.cn

400-901-9800

FSCN1 Recombinant Rabbit mAb**DATASHEET****Host:** Rabbit**Clonality:** Recombinant**GeneID:** 6624**Target:** FSCN1**Immunogen:** A synthesized peptide derived from human Fascin: 200-400/493.**Purification:** affinity purified by Protein A

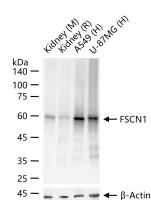
Storage: 10mM phosphate buffered saline(pH 7.4) with 150mM sodium chloride, 0.05% BSA, 0.02% Proclin300 and 50% glycerol. Store at 4°C for short term. Store at -20°C for long term. Avoid repeated freeze/thaw cycles.

Background: Actin-binding protein that contains 2 major actin binding sites.Organizes filamentous actin into parallel bundles.Plays a role in the organization of actin filament bundles and the formation of microspikes, membrane ruffles, and stress fibers.

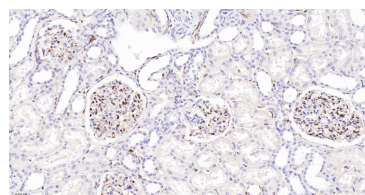
Isotype: IgG**CloneNo.:** 4F8**SWISS:** Q16658**Applications:** WB (1:500-2000)**IHC-P** (1:100-500)**IHC-F** (1:100-500)**IF** (1:100-500)**Flow-Cyt** (1:50-100)**ICC/IF** (1:50-200)**IP** (1:20-50)**Reactivity:** Human, Mouse, Rat

Predicted
MW.: 55

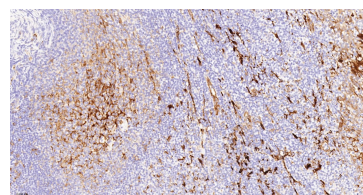
Subcellular
Location: Cytoplasm

VALIDATION IMAGES

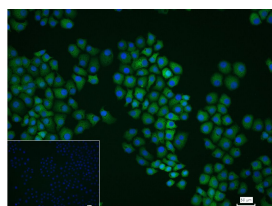
25 ug total protein per lane of various lysates (see on figure) probed with FSCN1 monoclonal antibody, unconjugated (bsm-61626R) at 1:1000 dilution and 4°C overnight incubation. Followed by conjugated secondary antibody incubation at r.t. for 60 min.



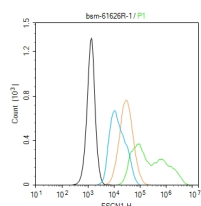
Paraformaldehyde-fixed, paraffin embedded Human Kidney; Antigen retrieval by boiling in sodium citrate buffer (pH6.0) for 15 min; The section was incubated with FSCN1 Monoclonal Antibody, Unconjugated (bsm-61626R) at 1:200 overnight at 4°C, followed by conjugation to the bs-0295G-HRP and DAB (C-0010) staining.



Paraformaldehyde-fixed, paraffin embedded Human Tonsil; Antigen retrieval by boiling in sodium citrate buffer (pH6.0) for 15 min; The section was incubated with FSCN1 Monoclonal Antibody, Unconjugated (bsm-61626R) at 1:200 overnight at 4°C, followed by conjugation to the bs-0295G-HRP and DAB (C-0010) staining.



4% Paraformaldehyde-fixed HepG2 (H) cell; Triton X-100 at r.t. for 20 min; Antibody incubation with (FSCN1) monoclonal Antibody, unconjugated (bsm-61626R) 1:100, 90 min at 37°C; followed by conjugated Goat Anti-Rabbit IgG antibody (green, bs-40295G-FITC) at 37°C for 90 min, DAPI (blue, C02-04002) was used to stain the cell nuclei. PBS instead of the primary antibody was used as the blank control.



The HepG2 (H) cells were fixed with 4% PFA (10 min at r.t.) and then permeabilized with 90% ice-cold methanol for 20 min at -20°C, the cells then were incubated in 5%BSA to block non-specific protein-protein interactions (30 min at r.t.).Primary Antibody (green):Rabbit Anti-FSCN1 antibody (bsm-61626R,1:100); Secondary Antibody (white blue): Goat anti-Rabbit IgG-BF488 (bs-60295G-BF488): 1 μg/test. Isotype Control (orange): Rabbit IgG (bs-0295P). Blank control (black): PBS. Acquisition of 20,000 events was performed.