

**bsm-61624R****[ Primary Antibody ]****BioSS**  
**ANTIBODIES**

www.bioss.com.cn

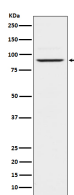
sales@bioss.com.cn

techsupport@bioss.com.cn

400-901-9800

**PRLR Recombinant Rabbit mAb****— DATASHEET —**

<b>Host:</b> Rabbit	<b>Isotype:</b> IgG	<b>Applications:</b> WB (1:500-2000) IHC-P (1:50-200) IHC-F (1:50-200) IF (1:50-200) ICC/IF (1:50-200)  <b>Reactivity:</b> Human, Mouse, Rat   <b>Predicted MW.:</b> 70  <b>Subcellular Location:</b> Secreted ,Cell membrane
<b>Clonality:</b> Recombinant		
<b>GeneID:</b> 5618	<b>SWISS:</b> P16471	
<b>Target:</b> PRLR		
<b>Immunogen:</b> A synthesized peptide derived from human Prolactin receptor: 50-87/622.		
<b>Purification:</b> affinity purified by Protein A		
<b>Storage:</b> 10mM phosphate buffered saline(pH 7.4) with 150mM sodium chloride, 0.05% BSA, 0.02% Proclin300 and 50% glycerol. Store at 4°C for short term. Store at -20°C for long term. Avoid repeated freeze/thaw cycles.		
<b>Background:</b> This is a receptor for the anterior pituitary hormone prolactin (PRL). Acts as a prosurvival factor for spermatozoa by inhibiting sperm capacitation through suppression of SRC kinase activation and stimulation of AKT. Isoform 4 is unable to transduce prolactin signaling. Isoform 6 is unable to transduce prolactin signaling.		

**— VALIDATION IMAGES —**

Western blot analysis of Jurkat cell lysate. Using PRLR (bsm-61624R) monoclonal antibody at 1:1000 dilution and 4°C overnight incubation. Followed by conjugated secondary antibody incubation at r.t. for 60 min.