

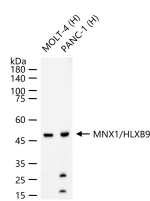
bsm-61623R**[Primary Antibody]****MNX1/HLXB9 Recombinant Rabbit mAb****Bioss**
ANTIBODIES

www.bioss.com.cn

sales@bioss.com.cn

techsupport@bioss.com.cn

400-901-9800

— DATASHEET —**Host:** Rabbit**Isotype:** IgG**Clonality:** Recombinant**CloneNo.:** 3F16**GeneID:** 3110**SWISS:** P50219**Target:** MNX1/HLXB9**Immunogen:** A synthesized peptide derived from human MNX1: 260-320/401.**Purification:** affinity purified by Protein A**Storage:** 10mM phosphate buffered saline(pH 7.4) with 150mM sodium chloride, 0.05% BSA, 0.02% Proclin300 and 50% glycerol.
Store at 4°C for short term. Store at -20°C for long term. Avoid repeated freeze/thaw cycles.**Background:** Putative transcription factor involved in pancreas development and function.**Applications:** **WB** (1:500-2000)
IP (1:20-50)**Reactivity:** Human (predicted: Mouse)**Predicted
MW.:** 41**Subcellular
Location:** Nucleus**— VALIDATION IMAGES —**

25 ug total protein per lane of various lysates
(see on figure) probed with MNX1/HLXB9
monoclonal antibody, unconjugated
(bsm-61623R) at 1:1000 dilution and 4°C
overnight incubation. Followed by conjugated
secondary antibody incubation at r.t. for 60 min.