

bsm-61622R**[Primary Antibody]****BioSS**
ANTIBODIES

www.bioss.com.cn

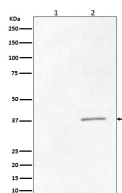
sales@bioss.com.cn

techsupport@bioss.com.cn

400-901-9800

phospho-CRK (Tyr221) Recombinant Rabbit mAb**— DATASHEET —**

Host: Rabbit	Isotype: IgG	Applications: WB (1:1000-2000) ICC/IF (1:50-200)
Clonality: Recombinant		
GeneID: 1398	SWISS: P46108	Reactivity: Human
Target: CRK (Tyr221)		
Immunogen: A synthesized peptide derived from human CRK around the phosphorylation site of Y221: GP-pY-AQ 216-226/304.		Predicted MW.: 34
Purification: affinity purified by Protein A		Subcellular Location: Cell membrane ,Cytoplasm
Storage: 10mM phosphate buffered saline(pH 7.4) with 150mM sodium chloride, 0.05% BSA, 0.02% Proclin300 and 50% glycerol. Store at 4°C for short term. Store at -20°C for long term. Avoid repeated freeze/thaw cycles.		
Background: The Crk-I and Crk-II forms differ in their biological activities. Crk-II has less transforming activity than Crk-I. Crk-II mediates attachment-induced MAPK8 activation, membrane ruffling and cell motility in a Rac-dependent manner. Involved in phagocytosis of apoptotic cells and cell motility via its interaction with DOCK1 and DOCK4. May regulate the EFNA5-EPHA3 signaling.		

— VALIDATION IMAGES —

Western blot analysis of (1) K562 cell lysate treated with AP; (2) K562 cell lysate. Using Phospho-CRK (Tyr221) (bsm-61622R) monoclonal antibody at 1:1000 dilution and 4°C overnight incubation. Followed by conjugated secondary antibody incubation at r.t. for 60 min.