

bsm-61620R**[Primary Antibody]**

Dynamin 1 Recombinant Rabbit mAb

Bioss
ANTIBODIES

www.bioss.com.cn

sales@bioss.com.cn

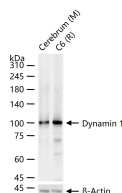
techsupport@bioss.com.cn

400-901-9800

— DATASHEET —

Host: Rabbit**Isotype:** IgG**Clonality:** Recombinant**CloneNo.:** 2E9**GeneID:** 1759**SWISS:** Q05193.2**Target:** Dynamin 1**Immunogen:** A synthesized peptide derived from human Dynamin 1: 800-864/864.**Purification:** affinity purified by Protein A**Storage:** 10mM phosphate buffered saline(pH 7.4) with 150mM sodium chloride, 0.05% BSA, 0.02% Proclin300 and 50% glycerol. Store at 4°C for short term. Store at -20°C for long term. Avoid repeated freeze/thaw cycles.**Background:** Catalyzes the hydrolysis of GTP and utilizes this energy to mediate vesicle scission and participates in many forms of endocytosis, such as clathrin-mediated endocytosis or synaptic vesicle endocytosis as well as rapid endocytosis (RE).**Applications:** WB (1:500-2000)**IHC-P** (1:100-200)**IHC-F** (1:100-200)**IF** (1:50-200)**ICC/IF** (1:50-200)**Reactivity:** Mouse, Rat
(predicted: Human)**Predicted
MW.:** 97**Subcellular
Location:** Cytoplasm

— VALIDATION IMAGES —



25 ug total protein per lane of various lysates
(see on figure) probed with Dynamin 1
monoclonal antibody, unconjugated
(bsm-61620R) at 1:1000 dilution and 4°C
overnight incubation. Followed by conjugated
secondary antibody incubation at r.t. for 60 min.