

bsm-61616R**[Primary Antibody]**

www.bioss.com.cn

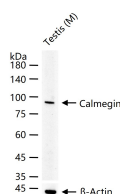
sales@bioss.com.cn

techsupport@bioss.com.cn

400-901-9800

Calmegin Recombinant Rabbit mAb**— DATASHEET —**

Host: Rabbit	Isotype: IgG	Applications: WB (1:500-2000) IHC-P (1:100-200) IHC-F (1:100-200) IF (1:50-200) Flow-Cyt (1:50-100) ICC/IF (1:50-200) IP (1:20-50) Reactivity: Mouse (predicted: Human, Rat) Predicted MW.: 70
Clonality: Recombinant		
GeneID: 1047	SWISS: O14967	
Target: Calmegin		
Immunogen: A synthesized peptide derived from human Calmegin: 180-350.		
Purification: affinity purified by Protein A		
Storage: 10mM phosphate buffered saline(pH 7.4) with 150mM sodium chloride, 0.05% BSA, 0.02% Proclin300 and 50% glycerol. Store at 4°C for short term. Store at -20°C for long term. Avoid repeated freeze/thaw cycles.		
Background: Functions during spermatogenesis as a chaperone for a range of client proteins that are important for sperm adhesion onto the egg zona pellucida and for subsequent penetration of the zona pellucida. Required for normal sperm migration from the uterus into the oviduct. Required for normal male fertility. Binds calcium ions.		

— VALIDATION IMAGES —

25 ug total protein per lane of various lysates
(see on figure) probed with Calmegin
monoclonal antibody, unconjugated
(bsm-61616R) at 1:1000 dilution and 4°C
overnight incubation. Followed by conjugated
secondary antibody incubation at r.t. for 60 min.