

bsm-61611R**[Primary Antibody]****BioSS**
ANTIBODIES

www.bioss.com.cn

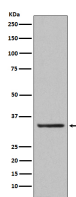
sales@bioss.com.cn

techsupport@bioss.com.cn

400-901-9800

ORAI1 Recombinant Rabbit mAb**— DATASHEET —**

Host: Rabbit	Isotype: IgG	Applications: WB (1:1000-2000)
Clonality: Recombinant		Reactivity: Human
GeneID: 84876	SWISS: Q96D31	
Target: ORAI1		
Immunogen: A synthesized peptide derived from human ORAI1: 200-250/301.		Predicted MW.: 33
Purification: affinity purified by Protein A		Subcellular Location: Cell membrane
Storage: 10mM phosphate buffered saline(pH 7.4) with 150mM sodium chloride, 0.05% BSA, 0.02% Proclin300 and 50% glycerol. Store at 4°C for short term. Store at -20°C for long term. Avoid repeated freeze/thaw cycles.		
Background: Pore-forming subunit of two major inward rectifying Ca ²⁺ channels at the plasma membrane: Ca ²⁺ release-activated Ca ²⁺ (CRAC) channels and arachidonate-regulated Ca ²⁺ -selective (ARC) channels (Probable).		

— VALIDATION IMAGES —

Western blot analysis of human platelet lysate.
Using ORAI1 (bsm-61611R) monoclonal antibody
at 1:1000 dilution and 4°C overnight incubation.
Followed by conjugated secondary antibody
incubation at r.t. for 60 min.