

**bsm-61610R****[ Primary Antibody ]****BioSS**  
ANTIBODIES

www.bioss.com.cn

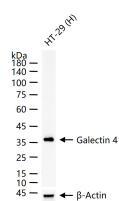
sales@bioss.com.cn

techsupport@bioss.com.cn

400-901-9800

**Galectin 4 Recombinant Rabbit mAb****— DATASHEET —**

<b>Host:</b> Rabbit	<b>Isotype:</b> IgG	<b>Applications:</b> WB (1:500-2000) IHC-P (1:100-200) IHC-F (1:100-200) IF (1:100-200)  <b>Reactivity:</b> Human (predicted: Rat)  <b>Predicted MW.:</b> 36
<b>Clonality:</b> Recombinant		
<b>GeneID:</b> 3960	<b>SWISS:</b> P56470	
<b>Target:</b> Galectin 4		
<b>Immunogen:</b> A synthesized peptide derived from human Galectin 4: 1-55/323.		
<b>Purification:</b> affinity purified by Protein A		
<b>Storage:</b> 10mM phosphate buffered saline(pH 7.4) with 150mM sodium chloride, 0.05% BSA, 0.02% Proclin300 and 50% glycerol. Store at 4°C for short term. Store at -20°C for long term. Avoid repeated freeze/thaw cycles.		
<b>Background:</b> Galectin that binds lactose and a related range of sugars. May be involved in the assembly of adherens junctions.		

**— VALIDATION IMAGES —**

25 ug total protein per lane of various lysates  
(see on figure) probed with Galectin 4  
monoclonal antibody, unconjugated  
(bsm-61610R) at 1:1000 dilution and 4°C  
overnight incubation. Followed by conjugated  
secondary antibody incubation at r.t. for 60 min.