

bsm-61608R**[Primary Antibody]****BioSS**
ANTIBODIES

www.bioss.com.cn

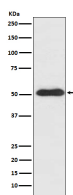
sales@bioss.com.cn

techsupport@bioss.com.cn

400-901-9800

SLIT2 Recombinant Rabbit mAb**— DATASHEET —**

Host: Rabbit	Isotype: IgG	Applications: WB (1:500-2000) IHC-P (1:50-200) IHC-F (1:50-200) IF (1:50-200) IP (1:20-50) Reactivity: Human, Mouse, Rat Predicted MW.: 170 Subcellular Location: Secreted
Clonality: Recombinant		
GeneID: 9353	SWISS: O94813	
Target: SLIT2		
Immunogen: A synthesized peptide derived from human Slit 2: 1400-1500/1529.		
Purification: affinity purified by Protein A		
Storage: 10mM phosphate buffered saline(pH 7.4) with 150mM sodium chloride, 0.05% BSA, 0.02% Proclin300 and 50% glycerol. Store at 4°C for short term. Store at -20°C for long term. Avoid repeated freeze/thaw cycles.		
Background: Thought to act as molecular guidance cue in cellular migration, and function appears to be mediated by interaction with roundabout homolog receptors.		

— VALIDATION IMAGES —

Western blot analysis of SH-SY5Y cell lysate.
Using SLIT2 (bsm-61608R) monoclonal antibody
at 1:1000 dilution and 4°C overnight incubation.
Followed by conjugated secondary antibody
incubation at r.t. for 60 min.