

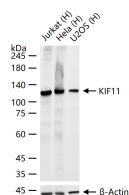
bsm-61607R**[Primary Antibody]****KIF11 Recombinant Rabbit mAb****BioSS**
ANTIBODIES

www.bioss.com.cn

sales@bioss.com.cn

techsupport@bioss.com.cn

400-901-9800

— DATASHEET —**Host:** Rabbit**Isotype:** IgG**Clonality:** Recombinant**CloneNo.:** 11C8**GeneID:** 3832**SWISS:** P52732**Target:** KIF11**Immunogen:** A synthesized peptide derived from human KIF11: 850-1056/1056.**Purification:** affinity purified by Protein A**Storage:** 10mM phosphate buffered saline(pH 7.4) with 150mM sodium chloride, 0.05% BSA, 0.02% Proclin300 and 50% glycerol. Store at 4°C for short term. Store at -20°C for long term. Avoid repeated freeze/thaw cycles.**Background:** Motor protein required for establishing a bipolar spindle. Blocking of KIF11 prevents centrosome migration and arrest cells in mitosis with monoastal microtubule arrays.**Applications:** **WB** (1:500-2000)**ICC/IF** (1:50-200)**IP** (1:20-50)**Reactivity:** Human**Predicted
MW.:** 119**Subcellular
Location:** Cytoplasm**— VALIDATION IMAGES —**

25 ug total protein per lane of various lysates (see on figure) probed with KIF11 monoclonal antibody, unconjugated (bsm-61607R) at 1:1000 dilution and 4°C overnight incubation. Followed by conjugated secondary antibody incubation at r.t. for 60 min.