

bsm-61602R**[Primary Antibody]****Bioss**
ANTIBODIES

www.bioss.com.cn

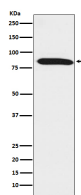
sales@bioss.com.cn

techsupport@bioss.com.cn

400-901-9800

DNAI1 Recombinant Rabbit mAb**— DATASHEET —**

Host: Rabbit	Isotype: IgG	Applications: WB (1:1000-2000)
Clonality: Recombinant		Reactivity: Human, Mouse, Rat
GeneID: 27019	SWISS: Q9UI46	
Target: DNAI1		
Immunogen: A synthesized peptide derived from human DNAI1: 1-240/699.		Predicted MW.: 79
Purification: affinity purified by Protein A		Subcellular Location: Cytoplasm
Storage: 10mM phosphate buffered saline(pH 7.4) with 150mM sodium chloride, 0.05% BSA, 0.02% Proclin300 and 50% glycerol. Store at 4°C for short term. Store at -20°C for long term. Avoid repeated freeze/thaw cycles.		
Background: Part of the dynein complex of respiratory cilia.		

— VALIDATION IMAGES —

Western blot analysis of mouse testis lysate.
Using DNAI1 (bsm-61602R) monoclonal antibody
at 1:1000 dilution and 4°C overnight incubation.
Followed by conjugated secondary antibody
incubation at r.t. for 60 min.