

**bsm-61597R****[ Primary Antibody ]****BioSS**  
ANTIBODIES

www.bioss.com.cn

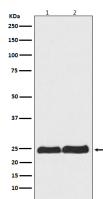
sales@bioss.com.cn

techsupport@bioss.com.cn

400-901-9800

**ARA24 Recombinant Rabbit mAb****— DATASHEET —**

<b>Host:</b> Rabbit	<b>Isotype:</b> IgG	<b>Applications:</b> <b>WB</b> (1:1000-2000)
<b>Clonality:</b> Recombinant		<b>Flow-Cyt</b> (1:50-100)
<b>GeneID:</b> 5901	<b>SWISS:</b> P62826	<b>ICC/IF</b> (1:50-200)
<b>Target:</b> ARA24		<b>IP</b> (1:20-50)
<b>Immunogen:</b> A synthesized peptide derived from human RAN: 180-216.		<b>Reactivity:</b> Human, Mouse, Rat
<b>Purification:</b> affinity purified by Protein A		
<b>Storage:</b> 10mM phosphate buffered saline(pH 7.4) with 150mM sodium chloride, 0.05% BSA, 0.02% Proclin300 and 50% glycerol. Store at 4°C for short term. Store at -20°C for long term. Avoid repeated freeze/thaw cycles.		<b>Predicted MW.:</b> 24
<b>Background:</b> GTP-binding protein involved in nucleocytoplasmic transport. Required for the import of protein into the nucleus and also for RNA export. Involved in chromatin condensation and control of cell cycle .		<b>Subcellular Location:</b> Cytoplasm ,Nucleus

**— VALIDATION IMAGES —**

Western blot analysis of (1)HeLa cell lysate;  
(2)RAW264.7 cell lysate. Using ARA24  
(bsm-61597R) monoclonal antibody at 1:1000  
dilution and 4°C overnight incubation. Followed  
by conjugated secondary antibody incubation at  
r.t. for 60 min.