

bsm-61595R**[Primary Antibody]****Chromogranin B Recombinant Rabbit mAb****Bioss**
ANTIBODIES

www.bioss.com.cn

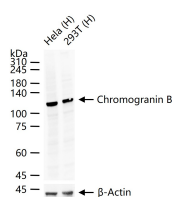
sales@bioss.com.cn

techsupport@bioss.com.cn

400-901-9800

— DATASHEET —

Host: Rabbit	Isotype: IgG	Applications: WB (1:500-2000)
Clonality: Recombinant	CloneNo.: 10B12	Reactivity: Human, Mouse, Rat
GeneID: 1114	SWISS: P05060	
Target: Chromogranin B		
Immunogen: A synthesized peptide derived from human Secretogranin 1: 600-677/677.		Predicted MW.: 78
Purification: affinity purified by Protein A		Subcellular Location: Secreted
Storage: 10mM phosphate buffered saline(pH 7.4) with 150mM sodium chloride, 0.05% BSA, 0.02% Proclin300 and 50% glycerol. Store at 4°C for short term. Store at -20°C for long term. Avoid repeated freeze/thaw cycles.		
Background: Secretogranin-1 is a neuroendocrine secretory granule protein, which may be the precursor for other biologically active peptides.		

— VALIDATION IMAGES —

25 ug total protein per lane of various lysates (see on figure) probed with Chromogranin B monoclonal antibody, unconjugated (bsm-61595R) at 1:1000 dilution and 4°C overnight incubation. Followed by conjugated secondary antibody incubation at r.t. for 60 min.