

[Primary Antibody]

IDH2 Recombinant Rabbit mAb



BioSS
ANTIBODIES

www.bioss.com.cn

sales@bioass.com.cn

techsupport@bioss.com.cn

400-901-9800

— DATASHEET

Host: Rabbit

Clonality: Recombinant

GeneID: 3418

Target: IDH2

Isotype: IgG

CloneNo.: 2A6

SWISS: P48735

Immunogen: A synthesized peptide derived from human IDH2: 400-452.

Purification: affinity purified by Protein A

Storage: 10mM phosphate buffered saline(pH 7.4) with 150mM sodium chloride, 0.05% BSA, 0.02% Proclin300 and 50% glycerol. Store at 4°C for short term. Store at -20°C for long term. Avoid repeated freeze/thaw cycles.

Background: Plays a role in intermediary metabolism and energy production. It may tightly associate or interact with the pyruvate dehydrogenase complex.

Applications: WB (1:500-2000)

IHC-P (1:50-200)

IHC-F (1:50-200)

IF (1:50-200)

Flow-Cyt (1μg/Test)

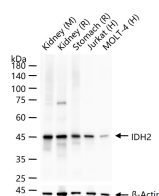
ICC/IF (1:50-200)

Reactivity: Human, Mouse, Rat

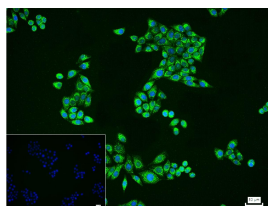
Predicted
MW.: 51

Subcellular Location: Cytoplasm

— VALIDATION IMAGES



25 ug total protein per lane of various lysates (see on figure) probed with IDH2 monoclonal antibody, unconjugated (bsm-61585R) at 1:1000 dilution and 4°C overnight incubation. Followed by conjugated secondary antibody incubation at r.t. for 60 min.



4% Paraformaldehyde-fixed MCF-7 (H) cell; Triton X-100 at r.t. for 20 min; Antibody incubation with (IDH2) monoclonal Antibody, unconjugated (bsm-61585R) 1:100, 90 min at 37°C; followed by conjugated Goat Anti-Rabbit IgG antibody (green, bs-40295G-FITC) at 37°C for 90 min, DAPI (blue, C02-04002) was used to stain the cell nuclei. PBS instead of the primary antibody was used as the blank control.