

bsm-61583R**[Primary Antibody]****phospho-CHEK2 (Thr68) Recombinant Rabbit mAb****Bioss**
ANTIBODIES

www.bioss.com.cn

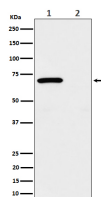
sales@bioss.com.cn

techsupport@bioss.com.cn

400-901-9800

— DATASHEET —

Host: Rabbit	Isotype: IgG	Applications: WB (1:1000-2000) IP (1:20-50)
Clonality: Recombinant		Reactivity: Human
GeneID: 11200	SWISS: O96017	
Target: CHEK2 (Thr68)		
Immunogen: A synthesized peptide derived from human Chk2 around the phosphorylation site of T68: TVS-pT-QE.		Predicted MW.: 61
Purification: affinity purified by Protein A		Subcellular Location: Nucleus
Storage: 10mM phosphate buffered saline(pH 7.4) with 150mM sodium chloride, 0.05% BSA, 0.02% Proclin300 and 50% glycerol. Store at 4°C for short term. Store at -20°C for long term. Avoid repeated freeze/thaw cycles.		
Background: Serine/threonine-protein kinase which is required for checkpoint-mediated cell cycle arrest, activation of DNA repair and apoptosis in response to the presence of DNA double-strand breaks.		

— VALIDATION IMAGES —

Western blot analysis of (1) 293 treated with UV and Untreated cell lysate; (2) Untreated. Using Phospho-CHEK2 (Thr68) (bsm-61583R) monoclonal antibody at 1:1000 dilution and 4°C overnight incubation. Followed by conjugated secondary antibody incubation at r.t. for 60 min.