

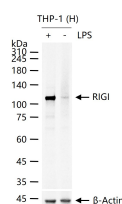
bsm-61573R**[Primary Antibody]****BioSS**
ANTIBODIES

www.bioss.com.cn

sales@bioss.com.cn

techsupport@bioss.com.cn

400-901-9800

RIGI Recombinant Rabbit mAb**— DATASHEET —****Host:** Rabbit**Isotype:** IgG**Clonality:** Recombinant**GeneID:** 23586**SWISS:** O95786**Target:** RIGI**Immunogen:** A synthesized peptide derived from human RIGI: 220-450.**Purification:** affinity purified by Protein A**Storage:** 10mM phosphate buffered saline(pH 7.4) with 150mM sodium chloride, 0.05% BSA, 0.02% Proclin300 and 50% glycerol.
Store at 4°C for short term. Store at -20°C for long term. Avoid repeated freeze/thaw cycles.**Background:** Innate immune receptor that senses cytoplasmic viral nucleic acids and activates a downstream signaling cascade leading to the production of type I interferons and pro-inflammatory cytokines.**Applications:** **WB** (1:500-2000)
IP (1:20-50)**Reactivity:** Human**Predicted MW.:** 107**— VALIDATION IMAGES —**

THP-1 (H) cells were treated with or without LPS (1ug/ml) for overnight, 25 µg total protein per lane of cell lysates (see on figure) probed with RIGI monoclonal antibody, unconjugated (bsm-61573R) at 1:1000 dilution and 4°C overnight incubation. Followed by conjugated secondary antibody incubation at r.t. for 60 min.