

[Primary Antibody]



BioSS
ANTIBODIES

www.bioss.com.cn

sales@bioss.com.cn

techsupport@bioss.com.cn

400-901-9800

— DATASHEET

Host: Rabbit

Isotype: IgG

Clonality: Recombinant

CloneNo.: 4E2

GeneID: 2348

SWISS: P15328

Target: Folate Receptor alpha

Immunogen: A synthesized peptide derived from human FOLR1: 1-60/257.

Purification: affinity purified by Protein A

Storage: 10mM phosphate buffered saline(pH 7.4) with 150mM sodium chloride, 0.05% BSA, 0.02% Proclin300 and 50% glycerol. Store at 4°C for short term. Store at -20°C for long term. Avoid repeated freeze/thaw cycles.

Background: Binds to folate and reduced folic acid derivatives and mediates delivery of 5-methyltetrahydrofolate and folate analogs into the interior of cells.

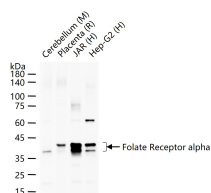
Applications: WB (1:500-2000)

Reactivity: Human, Mouse, Rat

Predicted MW.: 30

Subcellular Location: Cell membrane ,Cytoplasm

— VALIDATION IMAGES



25 ug total protein per lane of various lysates (see on figure) probed with Folate Receptor alpha monoclonal antibody, unconjugated (bsm-61571R) at 1:1000 dilution and 4°C overnight incubation. Followed by conjugated secondary antibody incubation at r.t. for 60 min.