

**bsm-61570R****[ Primary Antibody ]****KIF3A Recombinant Rabbit mAb****BioSS**  
**ANTIBODIES**

www.bioss.com.cn

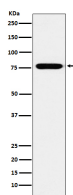
sales@bioss.com.cn

techsupport@bioss.com.cn

400-901-9800

**— DATASHEET —**

<b>Host:</b> Rabbit	<b>Isotype:</b> IgG	<b>Applications:</b> <b>WB</b> (1:1000-2000) <b>IP</b> (1:20-50)
<b>Clonality:</b> Recombinant		<b>Reactivity:</b> Human, Mouse, Rat
<b>GeneID:</b> 11127	<b>SWISS:</b> Q9Y496	
<b>Target:</b> KIF3A		
<b>Immunogen:</b> A synthesized peptide derived from human KIF3A: 640-699/699.		
<b>Purification:</b> affinity purified by Protein A		
<b>Storage:</b> 10mM phosphate buffered saline(pH 7.4) with 150mM sodium chloride, 0.05% BSA, 0.02% Proclin300 and 50% glycerol. Store at 4°C for short term. Store at -20°C for long term. Avoid repeated freeze/thaw cycles.		
<b>Background:</b> Microtubule-based anterograde translocator for membranous organelles. Plus end-directed microtubule sliding activity in vitro. Plays a role in primary cilia formation. Plays a role in centriole cohesion and subdistal appendage organization and function. Regulates the formation of the subdistal appendage via recruitment of DCTN1 to the centriole. Also required for ciliary basal feet formation and microtubule anchoring to mother centriole.		
		<b>Predicted MW.:</b> 80
		<b>Subcellular Location:</b> Cytoplasm

**— VALIDATION IMAGES —**

Western blot analysis of SH-SY5Y cell lysate.  
Using KIF3A (bsm-61570R) monoclonal antibody  
at 1:1000 dilution and 4°C overnight incubation.  
Followed by conjugated secondary antibody  
incubation at r.t. for 60 min.