

**bsm-61567R****[ Primary Antibody ]****ROCK2 Recombinant Rabbit mAb****BioSS**  
**ANTIBODIES**

www.bioss.com.cn

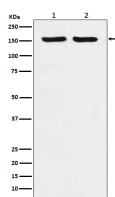
sales@bioss.com.cn

techsupport@bioss.com.cn

400-901-9800

**— DATASHEET —**

<b>Host:</b> Rabbit	<b>Isotype:</b> IgG	<b>Applications:</b> <b>WB</b> (1:1000-2000) <b>ICC/IF</b> (1:50-200)
<b>Clonality:</b> Recombinant		<b>Reactivity:</b> Human, Mouse, Rat
<b>GeneID:</b> 9475	<b>SWISS:</b> O75116	
<b>Target:</b> ROCK2		
<b>Immunogen:</b> A synthesized peptide derived from human ROCK2: 1300-1388.		
<b>Purification:</b> affinity purified by Protein A		
<b>Storage:</b> 10mM phosphate buffered saline(pH 7.4) with 150mM sodium chloride, 0.05% BSA, 0.02% Proclin300 and 50% glycerol. Store at 4°C for short term. Store at -20°C for long term. Avoid repeated freeze/thaw cycles.		
<b>Background:</b> Protein kinase which is a key regulator of actin cytoskeleton and cell polarity. Involved in regulation of smooth muscle contraction, actin cytoskeleton organization, stress fiber and focal adhesion formation, neurite retraction, cell adhesion and motility via phosphorylation of ADD1, BRCA2, CNN1, EZR, DPYSL2, EP300, MSN, MYL9/MLC2, NPM1, RDX, PPP1R12A and VIM. Phosphorylates SORL1 and IRF4.		
		<b>Predicted MW.:</b> 161
		<b>Subcellular Location:</b> Cell membrane ,Cytoplasm

**— VALIDATION IMAGES —**

Western blot analysis of (1) Hela cell lysate; (2) RAW264.7 cell lysate. Using ROCK2 (bsm-61567R) monoclonal antibody at 1:1000 dilution and 4°C overnight incubation. Followed by conjugated secondary antibody incubation at r.t. for 60 min.