

**bsm-61565R****[ Primary Antibody ]****BioSS**  
ANTIBODIES

www.bioss.com.cn

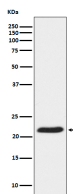
sales@bioss.com.cn

techsupport@bioss.com.cn

400-901-9800

**TCTP Recombinant Rabbit mAb****— DATASHEET —**

<b>Host:</b> Rabbit	<b>Isotype:</b> IgG	<b>Applications:</b> <b>WB</b> (1:1000-2000) <b>IHC-P</b> (1:100-200) <b>IHC-F</b> (1:100-200) <b>IF</b> (1:50-200) <b>Flow-Cyt</b> (1:50-100) <b>ICC/IF</b> (1:50-200) <b>IP</b> (1:20-50)  <b>Reactivity:</b> Human, Mouse, Rat  <b>Predicted MW.:</b> 20  <b>Subcellular Location:</b> Cytoplasm
<b>Clonality:</b> Recombinant		
<b>GeneID:</b> 7178	<b>SWISS:</b> P13693	
<b>Target:</b> TCTP		
<b>Immunogen:</b> A synthesized peptide derived from human TCTP: 50-100/172.		
<b>Purification:</b> affinity purified by Protein A		
<b>Storage:</b> 10mM phosphate buffered saline(pH 7.4) with 150mM sodium chloride, 0.05% BSA, 0.02% Proclin300 and 50% glycerol. Store at 4°C for short term. Store at -20°C for long term. Avoid repeated freeze/thaw cycles.		
<b>Background:</b> Involved in calcium binding and microtubule stabilization. Acts as a negative regulator of TSC22D1-mediated apoptosis, via interaction with and destabilization of TSC22D1 protein.		

**— VALIDATION IMAGES —**

Western blot analysis of HeLa cell lysate. Using TCTP (bsm-61565R) monoclonal antibody at 1:1000 dilution and 4°C overnight incubation. Followed by conjugated secondary antibody incubation at r.t. for 60 min.