

bsm-61563R**[Primary Antibody]**

Plasma kallikrein light chain Recombinant Rabbit mAb

BioSS
ANTIBODIES

www.bioss.com.cn

sales@bioss.com.cn

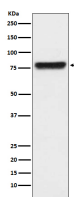
techsupport@bioss.com.cn

400-901-9800

— DATASHEET —

Host: Rabbit	Isotype: IgG	Applications: WB (1:500-2000) IHC-P (1:50-200) IHC-F (1:50-200) IF (1:50-200) IP (1:20-50) Reactivity: Human, Rat Predicted MW.: 71 Subcellular Location: Secreted
Clonality: Recombinant		
GeneID: 3818	SWISS: P03952	
Target: Plasma kallikrein light chain		
Immunogen: A synthesized peptide derived from human Plasma kallikrein: 600-638/638.		
Purification: affinity purified by Protein A		
Storage: 10mM phosphate buffered saline(pH 7.4) with 150mM sodium chloride, 0.05% BSA, 0.02% Proclin300 and 50% glycerol. Store at 4°C for short term. Store at -20°C for long term. Avoid repeated freeze/thaw cycles.		
Background: Participates in the surface-dependent activation of blood coagulation. Activates, in a reciprocal reaction, coagulation factor XII/F12 after binding to negatively charged surfaces. Releases bradykinin from HMW kininogen and may also play a role in the renin-angiotensin system by converting prorenin into renin.		

— VALIDATION IMAGES —



Western blot analysis of human plasma lysate.
Using Plasma kallikrein light chain (bsm-61563R) monoclonal antibody at 1:1000 dilution and 4°C overnight incubation. Followed by conjugated secondary antibody incubation at r.t. for 60 min.