

bsm-61561R**[Primary Antibody]****CA II Recombinant Rabbit mAb****BioSS**
ANTIBODIES

www.bioss.com.cn

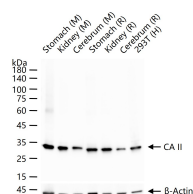
sales@bioss.com.cn

techsupport@bioss.com.cn

400-901-9800

— DATASHEET —

Host: Rabbit	Isotype: IgG	Applications: WB (1:500-2000) IHC-P (1:100-200) IHC-F (1:100-200) IF (1:100-200) Reactivity: Human, Mouse, Rat Predicted MW.: 29 Subcellular Location: Cytoplasm
Clonality: Recombinant		
GeneID: 760	SWISS: P00918	
Target: CA II		
Immunogen: A synthesized peptide derived from human Carbonic anhydrase 2: 200-260/260.		
Purification: affinity purified by Protein A		
Storage: 10mM phosphate buffered saline(pH 7.4) with 150mM sodium chloride, 0.05% BSA, 0.02% Proclin300 and 50% glycerol. Store at 4°C for short term. Store at -20°C for long term. Avoid repeated freeze/thaw cycles.		
Background: Catalyzes the reversible hydration of carbon dioxide. Can also hydrate cyanamide to urea. Stimulates the chloride-bicarbonate exchange activity of SLC26A6. Essential for bone resorption and osteoclast differentiation.		

— VALIDATION IMAGES —

25 ug total protein per lane of various lysates (see on figure) probed with CA II monoclonal antibody, unconjugated (bsm-61561R) at 1:1000 dilution and 4°C overnight incubation. Followed by conjugated secondary antibody incubation at r.t. for 60 min.