

**bsm-61560R****[ Primary Antibody ]****CD209/DC-SIGN Recombinant Rabbit mAb****BioSS**  
**ANTIBODIES**

www.bioss.com.cn

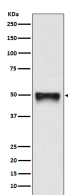
sales@bioss.com.cn

techsupport@bioss.com.cn

400-901-9800

**— DATASHEET —**

<b>Host:</b> Rabbit	<b>Isotype:</b> IgG	<b>Applications:</b> WB (1:500-2000)
<b>Clonality:</b> Recombinant		<b>Reactivity:</b> Human
<b>GeneID:</b> 30835	<b>SWISS:</b> Q9NNX6	
<b>Target:</b> CD209/DC-SIGN		
<b>Immunogen:</b> A synthesized peptide derived from human CD209: 2-74.		<b>Predicted MW.:</b> 46
<b>Purification:</b> affinity purified by Protein A		<b>Subcellular Location:</b> Secreted ,Cell membrane
<b>Storage:</b> 10mM phosphate buffered saline(pH 7.4) with 150mM sodium chloride, 0.05% BSA, 0.02% Proclin300 and 50% glycerol. Store at 4°C for short term. Store at -20°C for long term. Avoid repeated freeze/thaw cycles.		
<b>Background:</b> Pathogen-recognition receptor expressed on the surface of immature dendritic cells (DCs) and involved in initiation of primary immune response. Thought to mediate the endocytosis of pathogens which are subsequently degraded in lysosomal compartments. The receptor returns to the cell membrane surface and the pathogen-derived antigens are presented to resting T-cells via MHC class II proteins to initiate the adaptive immune response.		

**— VALIDATION IMAGES —**

Western blot analysis of HACAT cell lysate. Using CD209/DC-SIGN (bsm-61560R) monoclonal antibody at 1:1000 dilution and 4°C overnight incubation. Followed by conjugated secondary antibody incubation at r.t. for 60 min.