

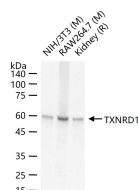
bsm-61558R**[Primary Antibody]****Bioss**
ANTIBODIES

www.bioss.com.cn

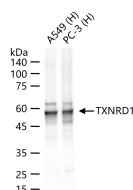
sales@bioss.com.cn

techsupport@bioss.com.cn

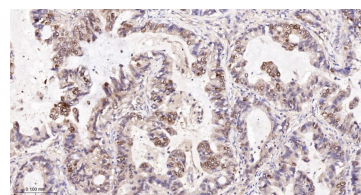
400-901-9800

TXNRD1 Recombinant Rabbit mAb**DATASHEET****Host:** Rabbit**Isotype:** IgG**Clonality:** Recombinant**CloneNo.:** 20F6**GeneID:** 7296**SWISS:** Q16881**Target:** TXNRD1**Immunogen:** A synthesized peptide derived from human TR: 1-649/649.**Purification:** affinity purified by Protein A**Storage:** 10mM phosphate buffered saline(pH 7.4) with 150mM sodium chloride, 0.05% BSA, 0.02% Proclin300 and 50% glycerol. Store at 4°C for short term. Store at -20°C for long term. Avoid repeated freeze/thaw cycles.**Background:** Homodimeric flavoprotein involved in the regulation of cellular redox reactions, growth and differentiation. Contains a selenocysteine residue at the C-terminal active site that is essential for catalysis (Probable). Also has reductase activity on hydrogen peroxide (H₂O₂).**Applications:** **WB** (1:1000-5000)**IHC-P** (1:100-500)**IHC-F** (1:100-500)**IF** (1:100-500)**IP** (1:20-50)**Reactivity:** Human, Mouse, Rat**Predicted
MW.:** 71**Subcellular
Location:** Cytoplasm ,Nucleus**VALIDATION IMAGES**

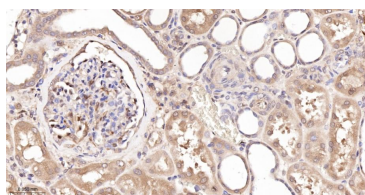
25 ug total protein per lane of various lysates (see on figure) probed with TXNRD1 monoclonal antibody, unconjugated (bsm-61558R) at 1:1000 dilution and 4°C overnight incubation. Followed by conjugated secondary antibody incubation at r.t. for 60 min.



25 ug total protein per lane of various lysates (see on figure) probed with TXNRD1 monoclonal antibody, unconjugated (bsm-61558R) at 1:1000 dilution and 4°C overnight incubation. Followed by conjugated secondary antibody incubation at r.t. for 60 min.



Paraformaldehyde-fixed, paraffin embedded Human Lung Cancer; Antigen retrieval by boiling in sodium citrate buffer (pH6.0) for 15 min; The section was incubated with TXNRD1 Monoclonal Antibody, Unconjugated (bsm-61558R) at 1:200 overnight at 4°C, followed by conjugation to the bs-0295G-HRP and DAB (C-0010) staining.



Paraformaldehyde-fixed, paraffin embedded Human Kidney; Antigen retrieval by boiling in sodium citrate buffer (pH6.0) for 15 min; Antibody incubation with TXNRD1 Monoclonal Antibody, Unconjugated (bsm-61558R) at 1:200 overnight at 4°C, followed by conjugation to the bs-0295G-HRP and DAB (C-0010) staining.